



**India Meteorological Department
(Ministry of Earth Sciences)**

HOURLY UPDATE ON SEVERE CYCLONIC STORM "DANA"

BULLETIN NO. 14

DATE: 25-10-2024

TIME OF ISSUE: 0715 HRS IST

DATE/TIME (IST) OF OBSERVATION	BASED ON 25-10-2024 (0630 HRS IST)
LOCATION LATITUDE/LONGITUDE	THE SEVERE CYCLONIC STORM "DANA" (PRONOUNCED AS DANA) MOVED NORTH-NORTHWESTWARDS WITH A SPEED OF 10 KMPH AND LAY CENTRED AT 0630 HRS IST OF TODAY, THE 25TH OCTOBER, OVER NORTH COASTAL ODISHA NEAR LATITUDE 21.05° N AND LONGITUDE 86.80°E, ABOUT 30 KM NORTH-NORTHWEST OF DHAMARA AND 50 KM NORTH-NORTHWEST OF HABALIKHATI NATURE CAMP (BHITARKANIKA).
CURRENT INTENSITY WIND SPEED	SEVERE CYCLONIC STORM 100-110 KMPH GUSTING TO 120 KMPH
FORECAST	<i>LANDFALL PROCESS CONTINUES AND THE REAR SECTOR OF THE CYCLONE IS ENTERING INTO LAND. THE LANDFALL PROCESS WOULD CONTINUE FOR NEXT 1 HOUR.</i> <i>IT IS LIKELY TO MOVE NEARLY NORTHWESTWARDS ACROSS NORTH ODISHA AND WEAKEN GRADUALLY INTO A CYCLONIC STORM BY FORENOON OF TODAY, THE 25TH OCTOBER.</i> THE SYSTEM IS UNDER CONTINUOUS SURVEILLANCE OF THE DOPPLER WEATHER RADAR AT PARADIP.

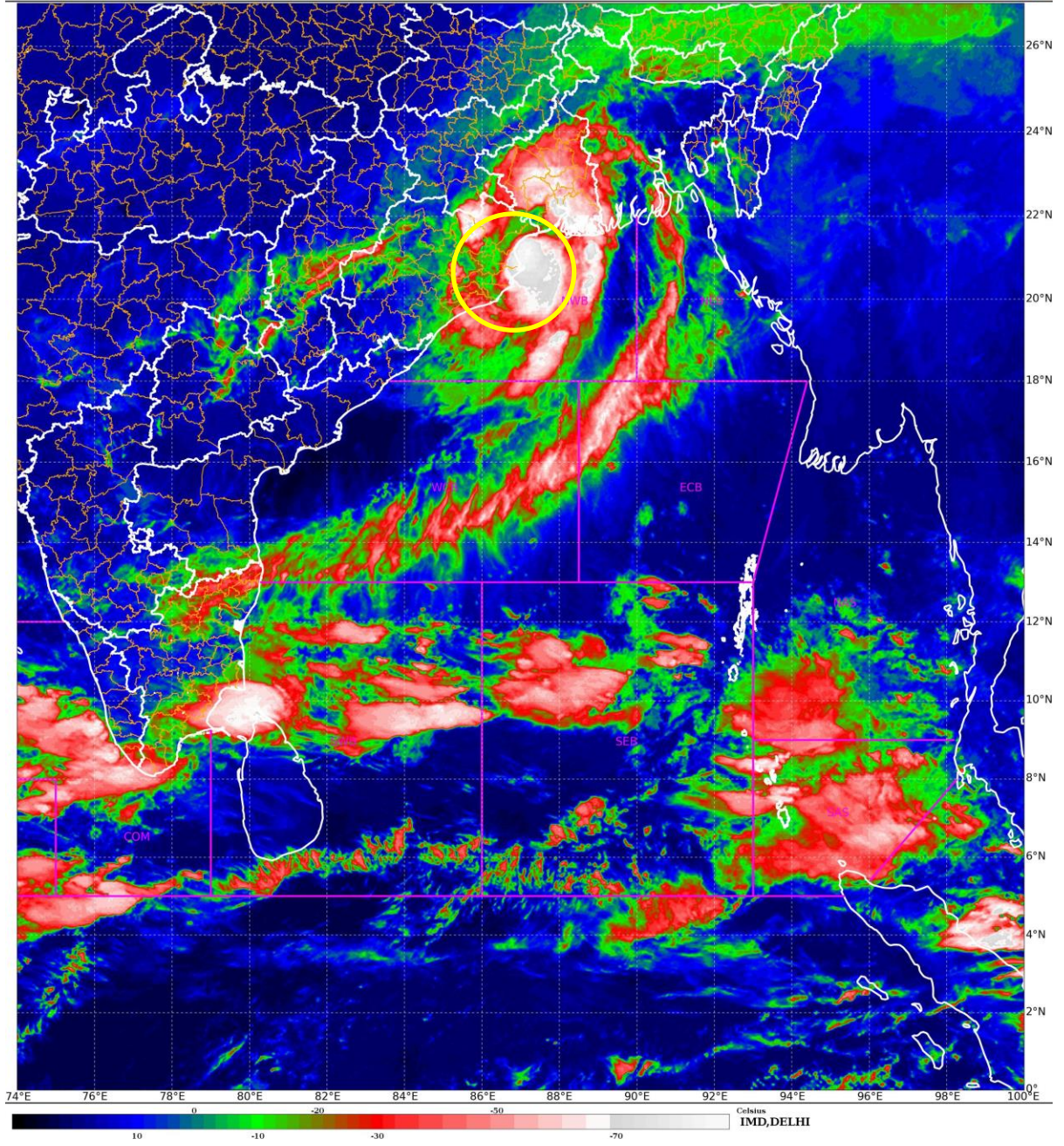
OBSERVED WEATHER:

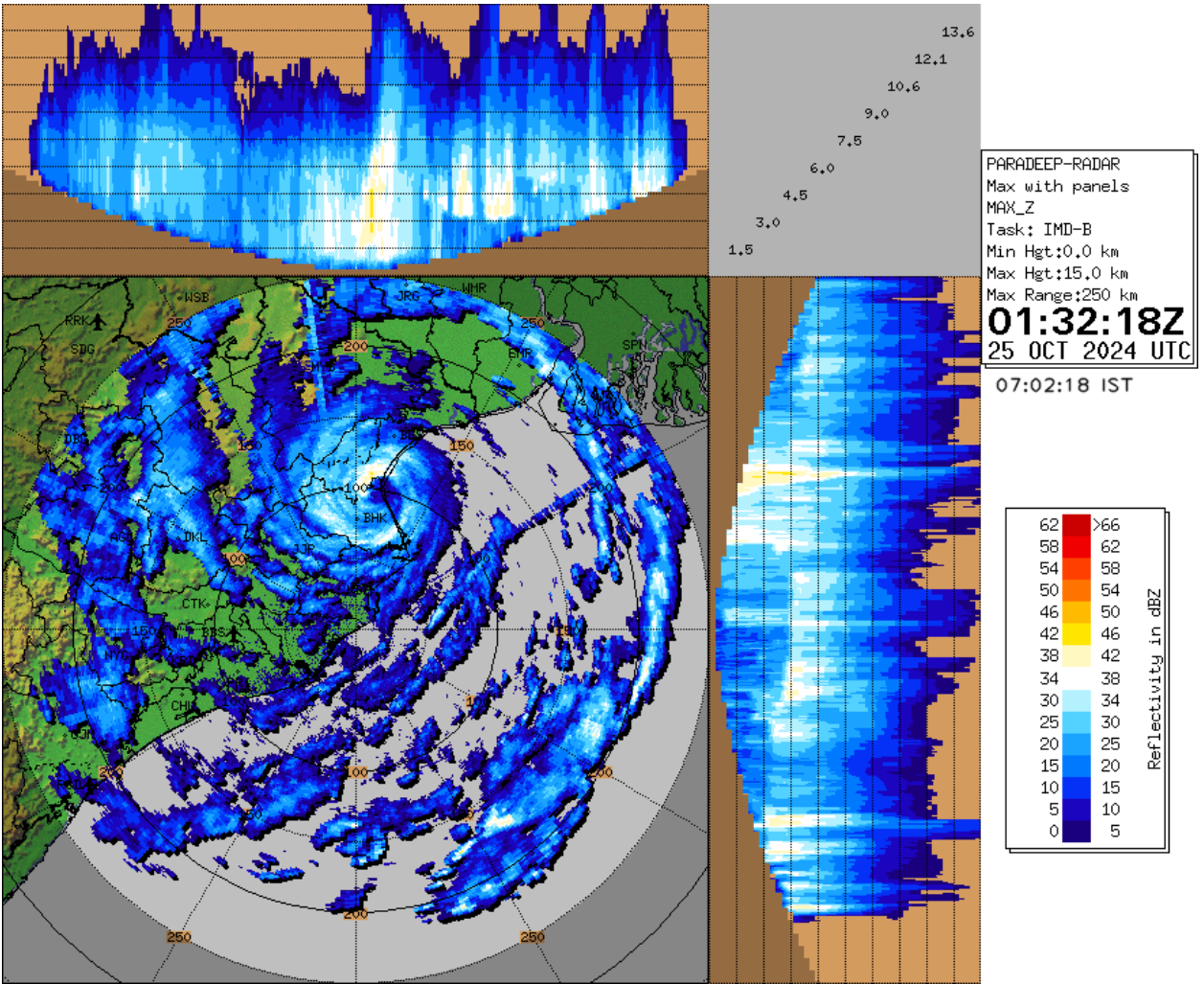
STATION	RAINFALL (MM) (0830-0630 HRS IST)	WINDSPEED (KMPH) AT 0630 HRS IST	STATION	RAINFALL (0830-0630 HRS IST)	WINDSPEED (KMPH) AT 0630 HRS IST
BHUBANESWAR	20.4	7/NWLY	HALDIA	63.0	15/ESELY
BALASORE	48.8	26/ENELY	DIGHA	37.0	11/ESELY
CHANDBALI	145.8	20/NWLY	DIAMOND HARBOUR	67.0	7/ESELY
PARADIP	76.4	15/SWLY			

SATELLITE IMAGERY

SAT : INSAT-3DR IMG
IMG_TIR1_TEMP 10.8 um
LIC Mercator

25-10-2024/(0045 to 0112) GMT
25-10-2024/(0615 to 0642) IST

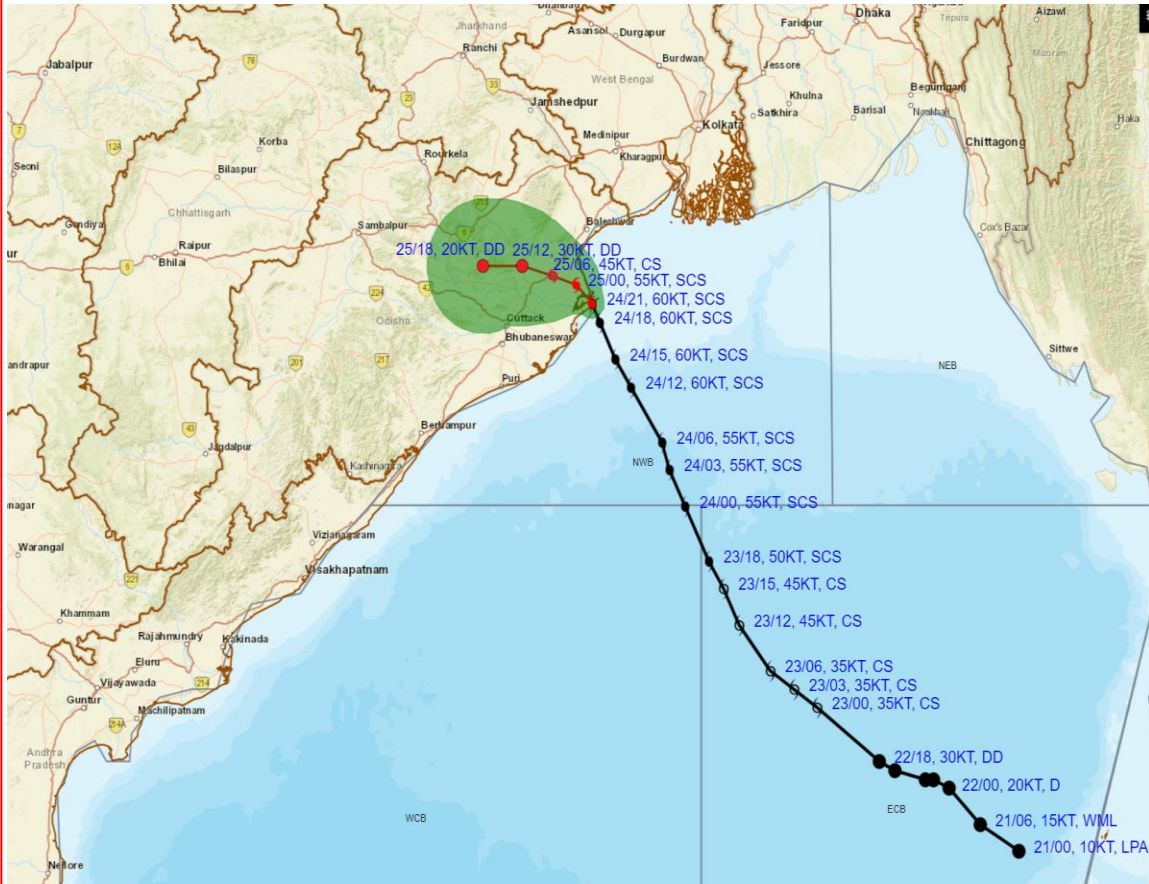




RADAR OBSERVATIONS (MAX_Z) OF DWR PARADIP



OBSERVED AND FORECAST TRACK ALONGWITH CONE OF UNCERTAINTY OF SEVERE CYCLONIC STORM 'DANA' OVER NORTH ODISHA COAST BASED ON 2100 UTC (0230 Hrs. IST) OF 24th OCTOBER 2024



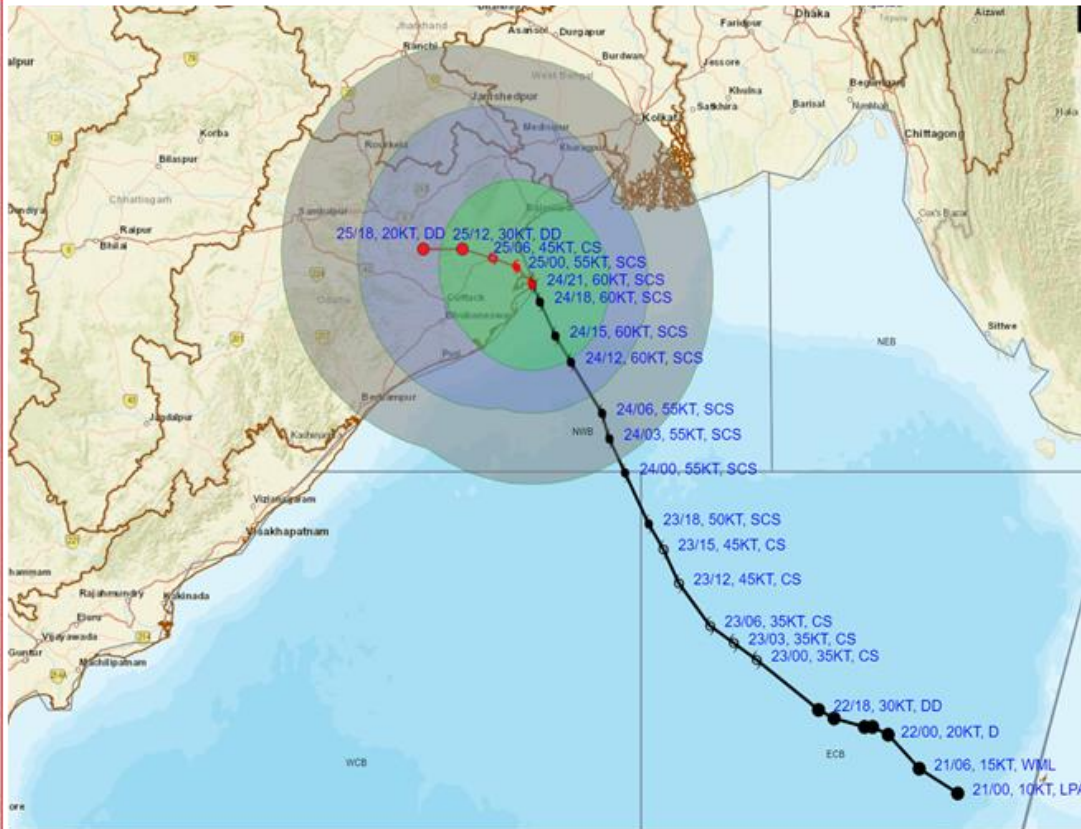
DATE/TIME : IN UTC
 IST : UTC + 0530
 KT : NAUTICAL MILE S/HOUR = 1.85 KM/HOUR
 LPA : LOW PRESSURE AREA
 WML : WELL MARKED LOW PRESSURE AREA
 D : DEPRESSION (17-27 KT)
 DD : DEEP DEPRESSION (28-33 KT)
 CS : CYCLONIC STORM (34-47 KT)
 SCS : SEVERE CYCLONIC STORM (48-63 KT)
 VSCS : VERY SEVERE CYCLONIC STORM (64-89 KT)
 ESCS : EXTREMELY SEVERE CYCLONIC STORM (90-119 KT)
 SuCS : SUPER CYCLONIC STORM (≥ 120 KT)

● LESS THAN 34 KT
 ⌀ 34-47 KT
 ⌀ ≥ 48 KT
 — OBSERVED TRACK
 — FORECAST TRACK
 ▲ CONE OF UNCERTAINTY

Forecast	DISTANCE (KM) AND DIRECTION FROM STATIONS		
Date and Time (UTC)	PARADIP (CWR)	DHAMARA	SAGAR ISLAND
24.10.24/2100	60, NE	20, SE	150, SW
25.10.24/1800	140, NW	140, WNW	260, WSW



OBSERVED AND FORECAST TRACK ALONGWITH QUADRANT WIND DISTRIBUTION OF SEVERE CYCLONIC STORM 'DANA' OVER NORTH ODISHA COAST BASED ON 2100 UTC (0230 Hrs. IST) OF 24th OCTOBER 2024



DATE/TIME : IN UTC
 IST : UTC + 0530
 KT : NAUTICAL MILE/ HOUR = 1.85 KM/HOUR
 LPA : LOW PRESSURE AREA
 WML : WELL MARKED LOW PRESSURE AREA
 D : DEPRESSION (17-27 KT)
 DD : DEEP DEPRESSION (28-33 KT)
 CS : CYCLONIC STORM (34-47 KT)
 SCS : SEVERE CYCLONIC STORM (48-63 KT)
 VSCS : VERY SEVERE CYCLONIC STORM (64-89 KT)
 ESCS : EXTREMELY SEVERE CYCLONIC STORM (90-119 KT)
 SuCS : SUPER CYCLONIC STORM (≥120 KT)

● LESS THAN 34 KT
 ○ 34-47 KT
 ● ≥ 48 KT
 — OBSERVED TRACK
 — FORECAST TRACK
 ○ CONE OF UNCERTAINTY
 AREA OF MAXIMUM SUSTAINED WIND SPEED:
 ■ 28-33 KT (52-61 KMPH)
 ■ 34-49 KT (62-91 KMPH)
 ■ 50-63 KT (92-117 KMPH)
 ■ ≥ 64 KT (≥118 KMPH)

IMPACT OVER THE SEA

MSW (knot/kmph)	Impact	Action
28-33 (52-61)	Very rough seas	Total suspension of fishing operations
34-49 (62-91)	High to very high seas	Total suspension of fishing operations
50-63 (92-117)	Very high seas	Total suspension of fishing operations
≥ 64 (≥118)	Phenomenal	Total suspension of fishing operations